

Rolling to Remember

May 23-25, 2025

Ride Route



Memorial Day Weekend

May 23, 24, 25



Friday

Blessing of the Bikes – 5 PM

Candlelight Vigil at the Wall – 9 PM



Saturday-Sunday

Thunder Alley – 9 AM to 5 PM each day



Sunday

Demonstration Ride – 12 PM

FRIDAY – Kickoff Events

Washington, D.C.

May 23, 2025

5 – 5:30 PM

- Blessing of the Bikes – 5 PM
National Cathedral

8 – 9:30 PM

- Parking on Henry Bacon Drive

9 – 9:30 PM

- Vigil – 9 PM
Vietnam Veterans Memorial



PRE-RIDE STAGING AREA: NORTH PARKING LOT

To enter the staging area Sunday morning, use Boundary Channel Drive, coming in from the south side of the Pentagon Reservation. The northern entrance to the lot will be closed, only passable under police escort.

VIA I-395 SOUTH:

From I-395 S, take exit 10A, Boundary Channel Dr toward Pentagon North Parking 3. Proceed up . Boundary Channel Drive to North Parking Lot.

VIA I-395 North:

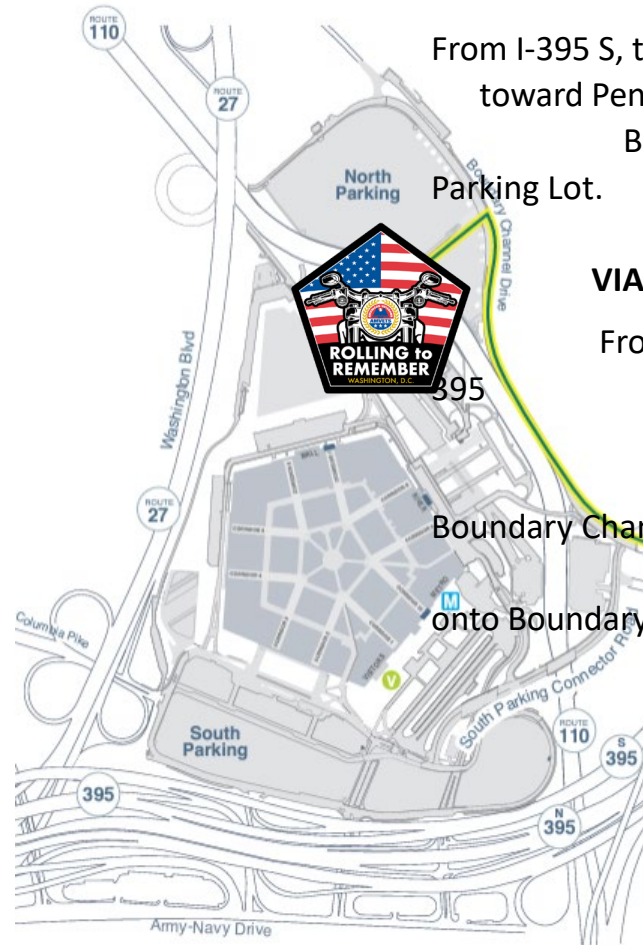
From I-395 N, take exit 10A-B from I-

N/US-1 N. Keep right on the ramp toward

and then turn right

Channel Drive. Continue on Boundary Channel Drive to the North Parking Lot.

The Rolling to Remember crew will direct you into the next available space.

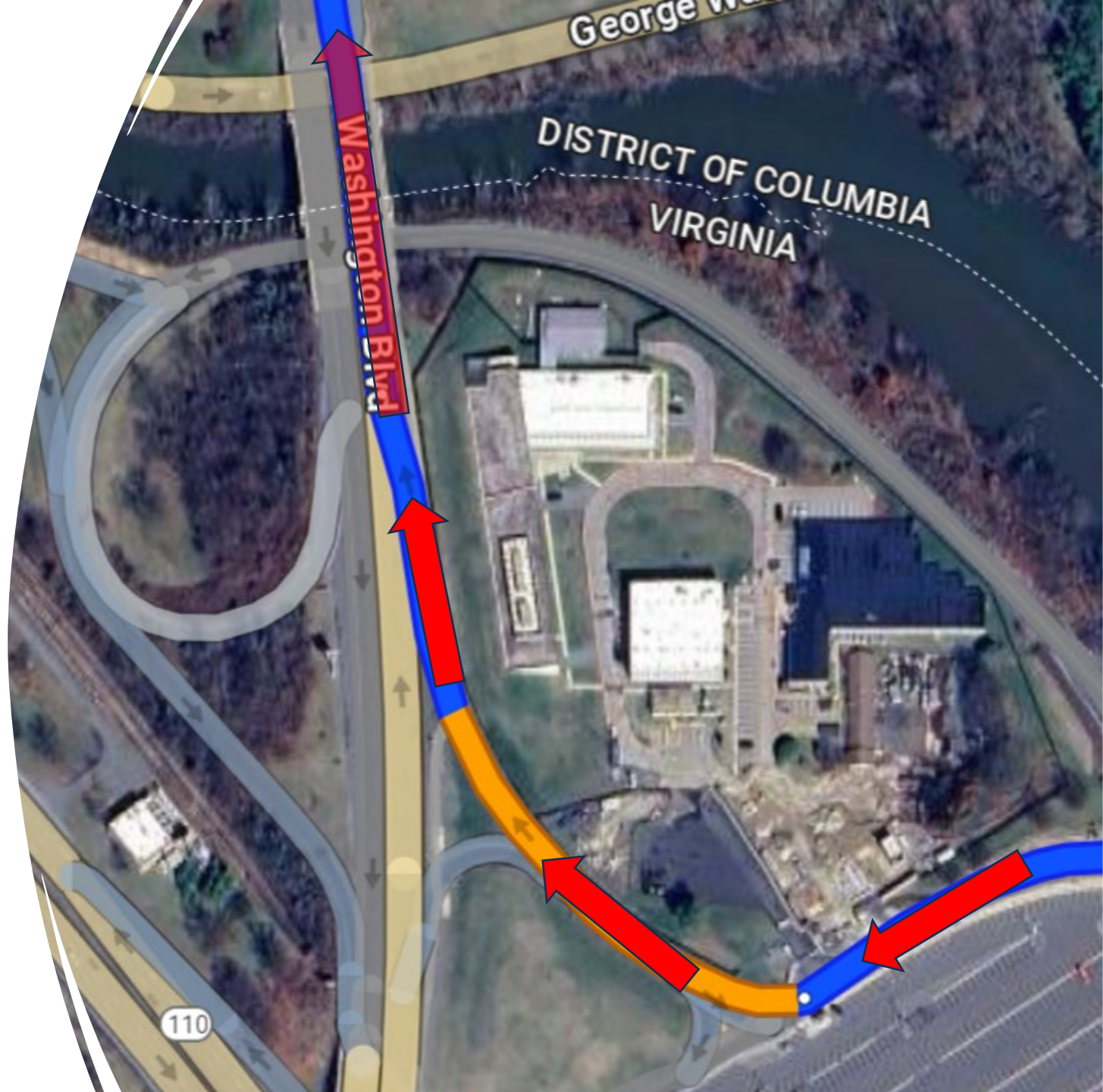


The parking lot opens to the public at 0700. Parking is first-come, first-parked. Consider joining the three large groups coming in under police escort from the Harley-Davidson dealerships in Fort Washington, MD; Fairfax, VA; and Quantico, VA.



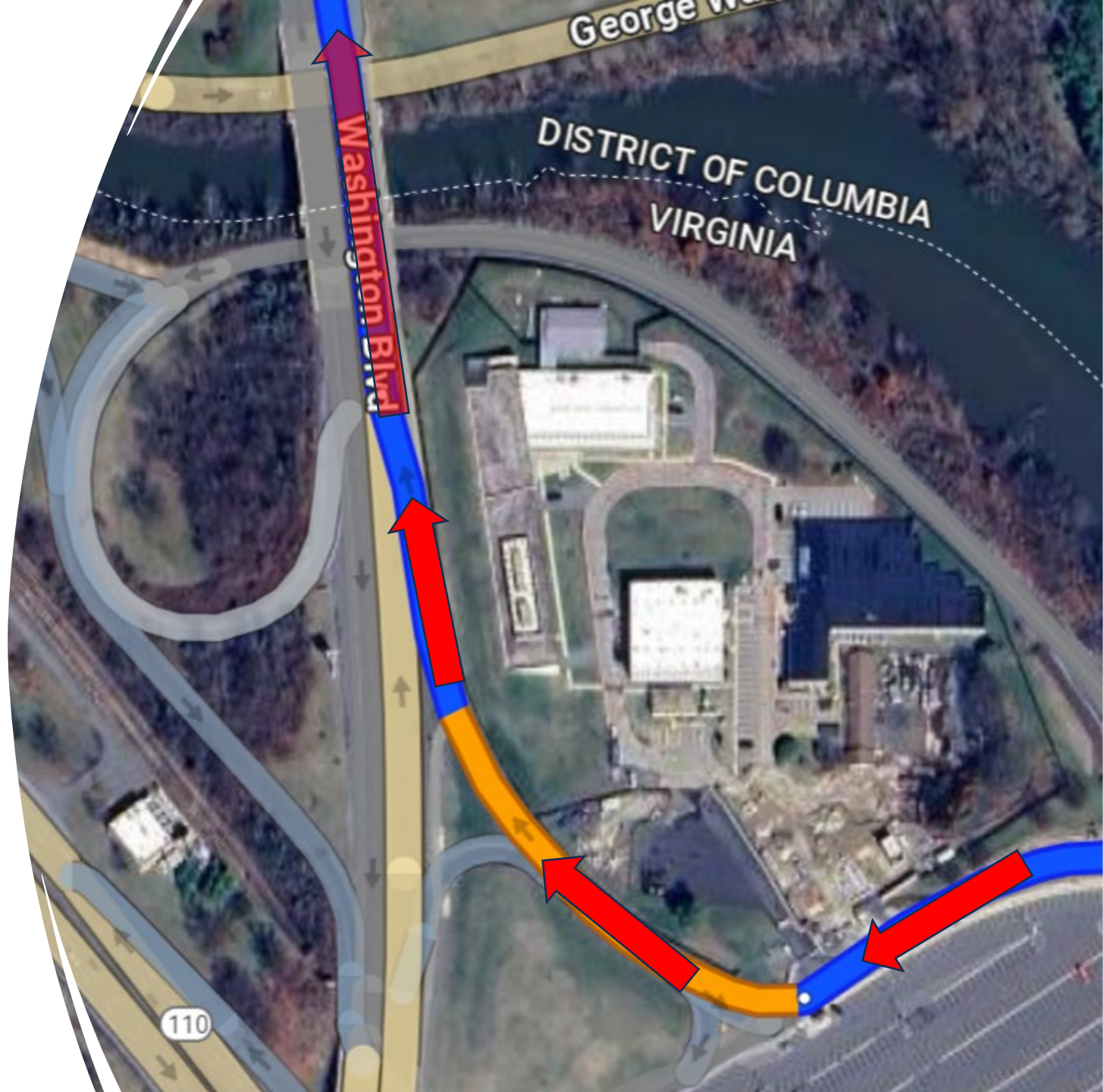
Departing the Pentagon

- Starting at high noon
- Head up the ramp on Boundary Channel Drive to George Washington Memorial Boulevard
- Merge onto S Washington Blvd



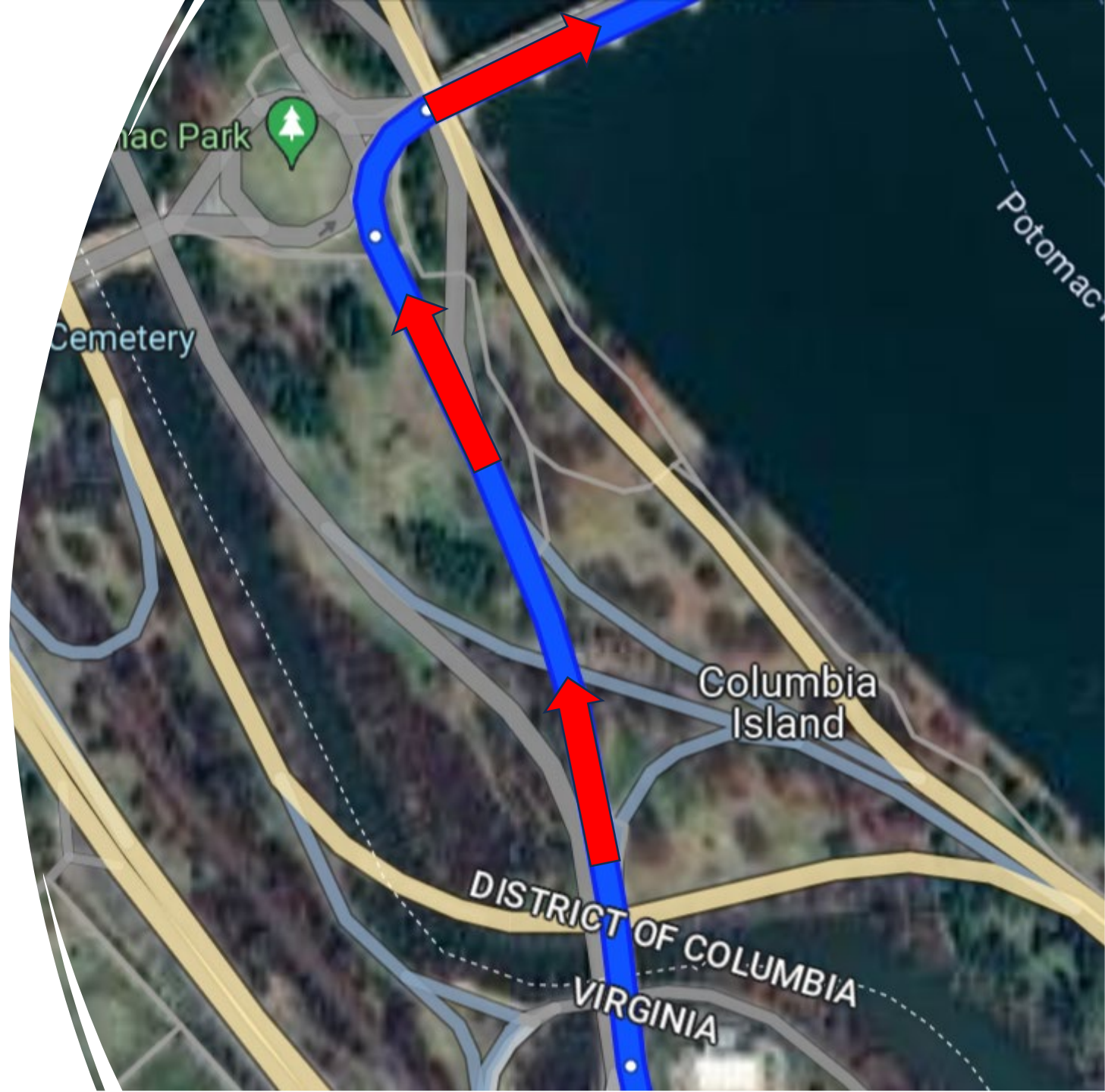
Departing the Pentagon

- Head up the ramp on Boundary Channel Drive to George Washington Memorial Boulevard
- Merge onto S Washington Blvd



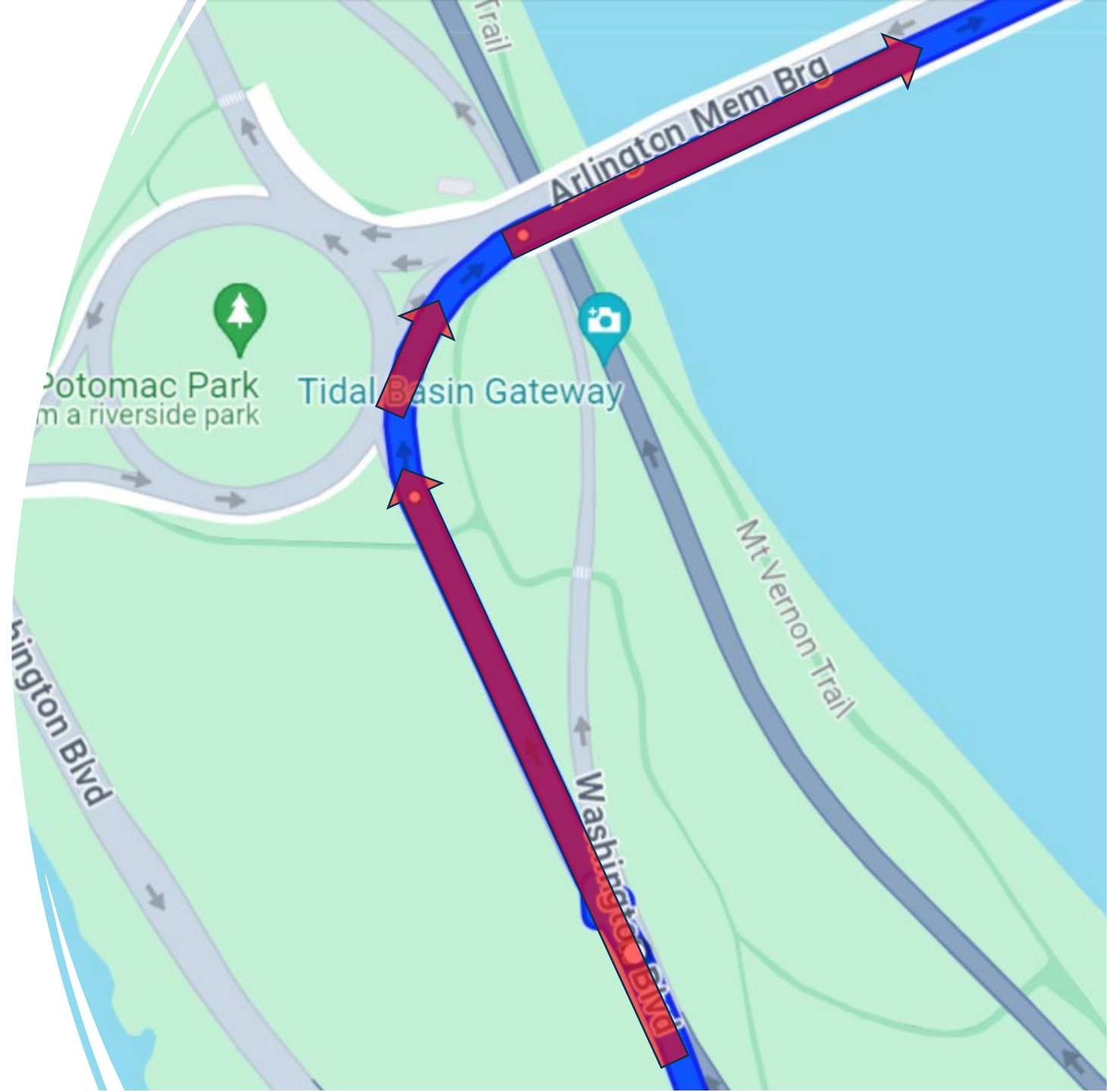
Heading to the Potomac

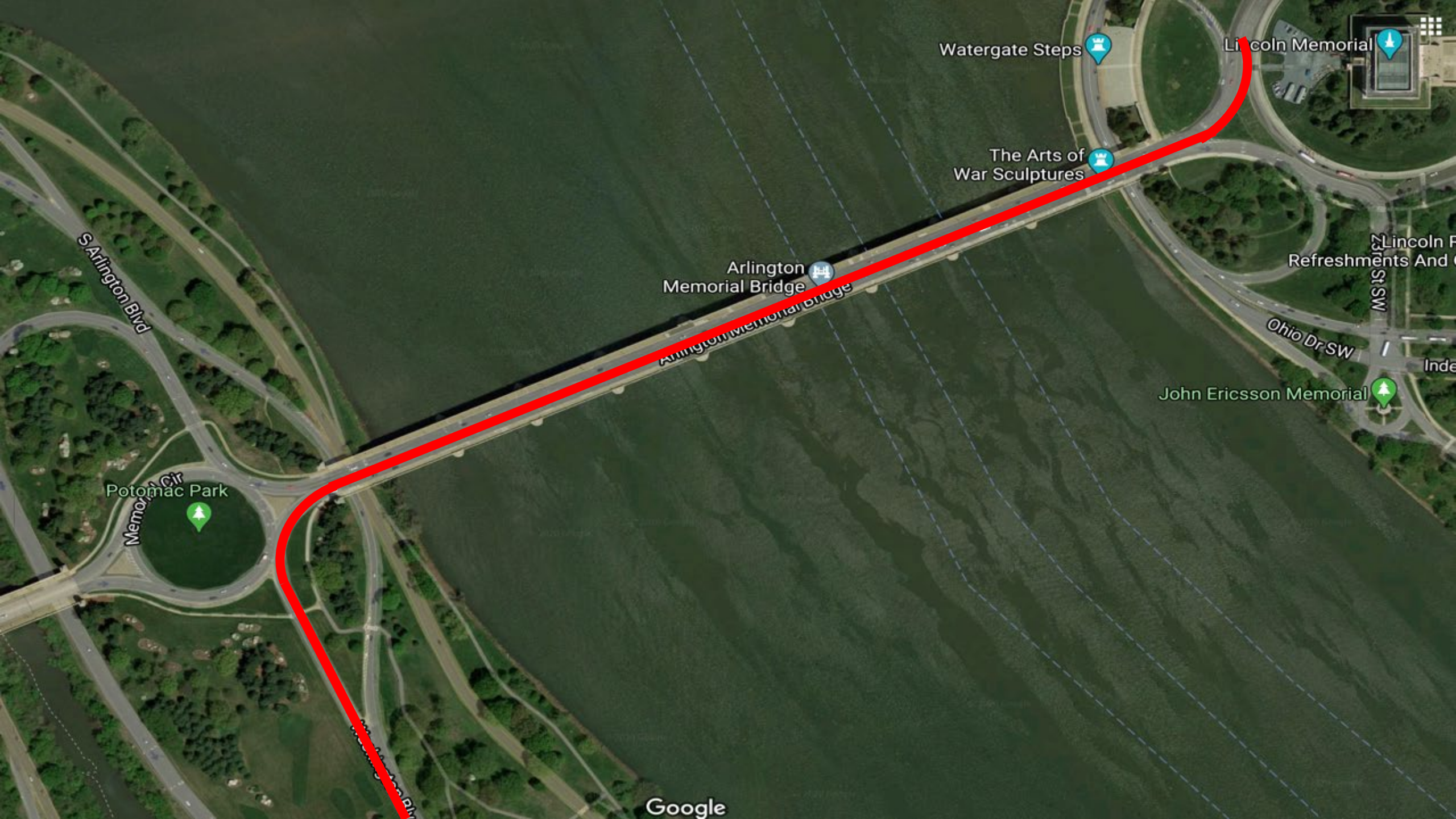
- Take S Washington Blvd to the Arlington Memorial Bridge toward Memorial Circle



Crossing the Potomac River

- Take the ramp to Memorial Circle
- Use the right lanes to take the ramp to Memorial Circle
- Continue onto Arlington Memorial Bridge





Watergate Steps

Lincoln Memorial

The Arts of War Sculptures

Arlington Memorial Bridge

Lincoln Park
Refreshments And...

Ohio Dr SW

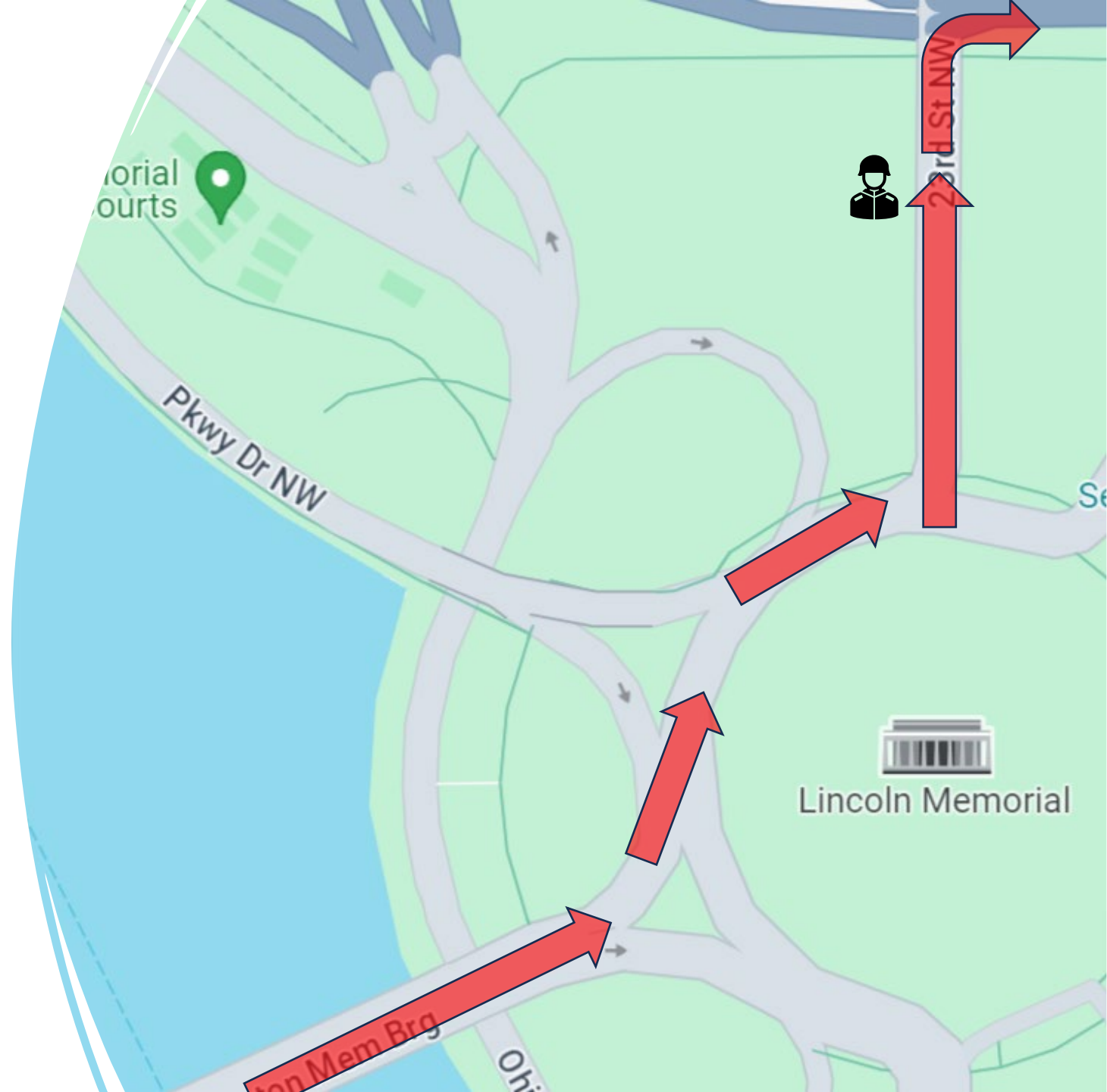
John Ericsson Memorial

Potomac Park

Google

Behind Lincoln

- Coming into Washington over the Arlington Memorial Bridge
- Turn left onto Lincoln Memorial Circle NW
- Left onto 23rd St NW
- Right onto Constitution Ave NW





Statue of Albert Einstein

THUNDER
ALLEY

Constitution Ave NW

Vietnam Veterans
Memorial

VIGIL
FRIDAY NIGHT

Constitution
Gardens

National Museum of
African American...

Lincoln Memorial

VIGIL - SUNDAY at 2 PM

Lincoln Memorial
Reflecting Pool

Washington Mo...

Korean War
Veterans
Memorial

Ash Woods

Independence Ave SW

Independence Ave SW

Martin Luther
King, Jr.
Memorial

West Potomac Park

United States Holocaust
Memorial Museum

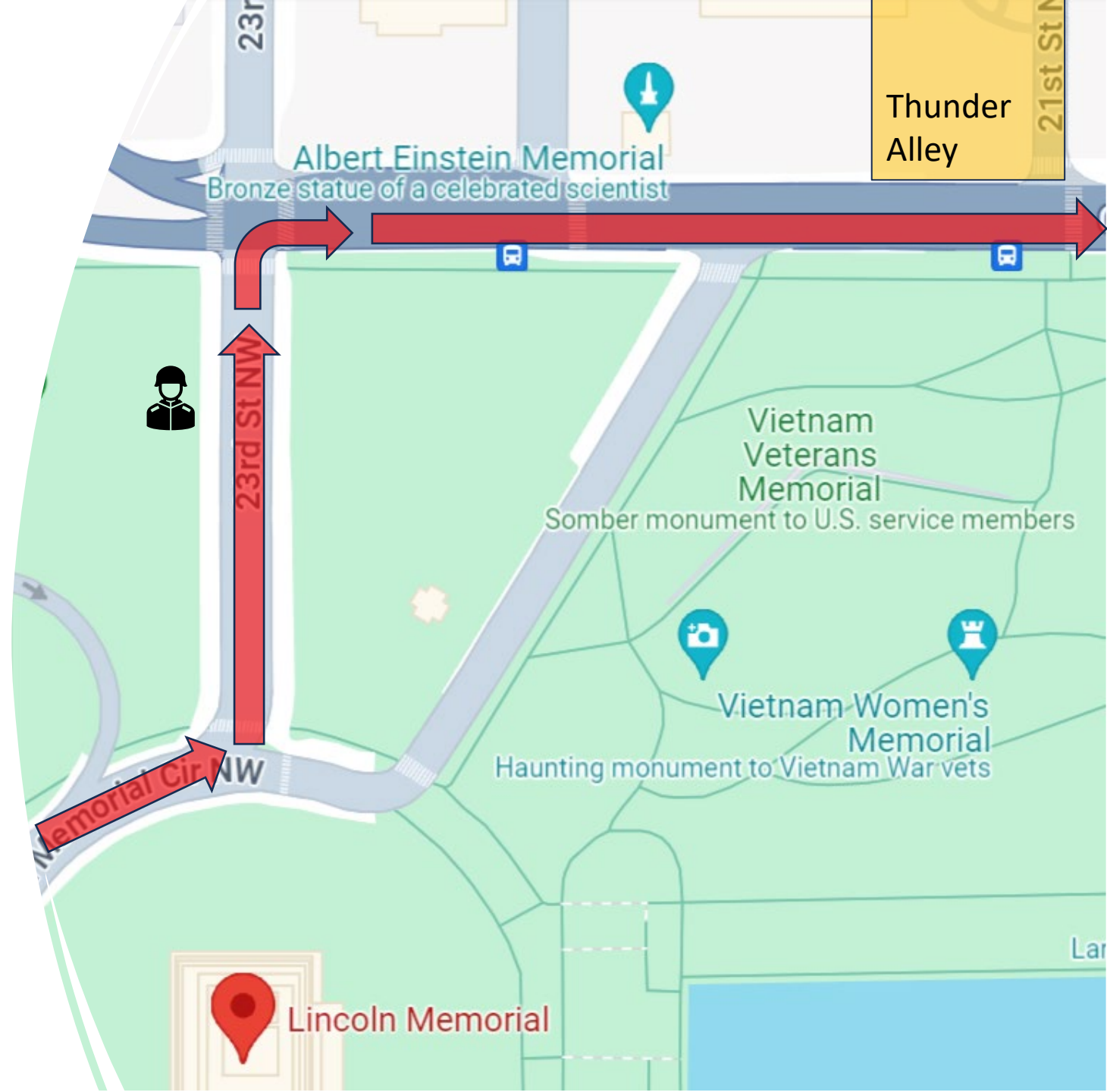
Bureau of Engraving
and Printing

Potomac River

tidal Basin

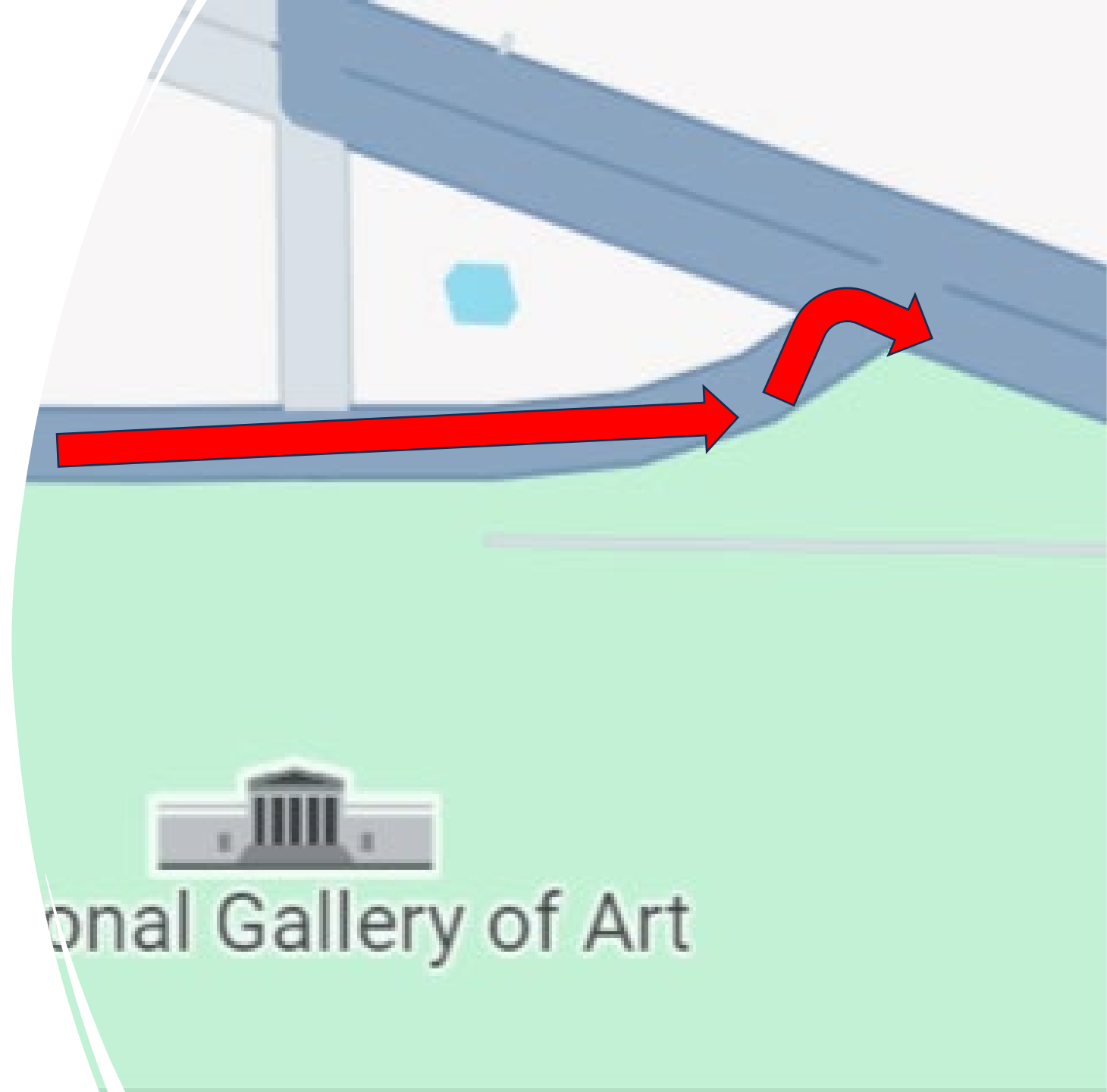
Onto Constitution

- North on 23rd St NW
- Turn right onto Constitution Ave NW
- Ride past White House, toward Capitol Hill



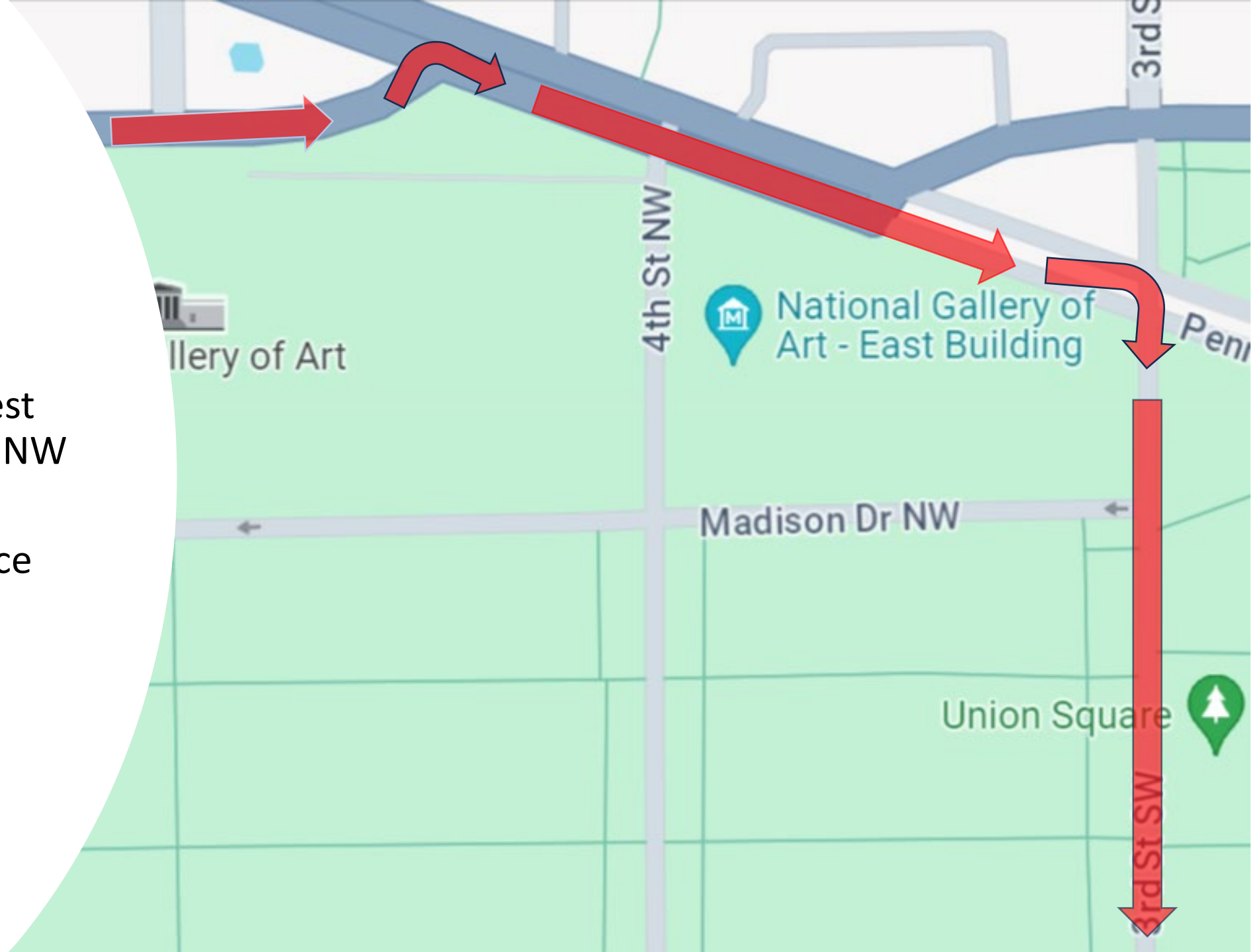
Onto Pennsylvania

- From the west on Constitution Ave NW
- Turn right onto Pennsylvania Ave NW



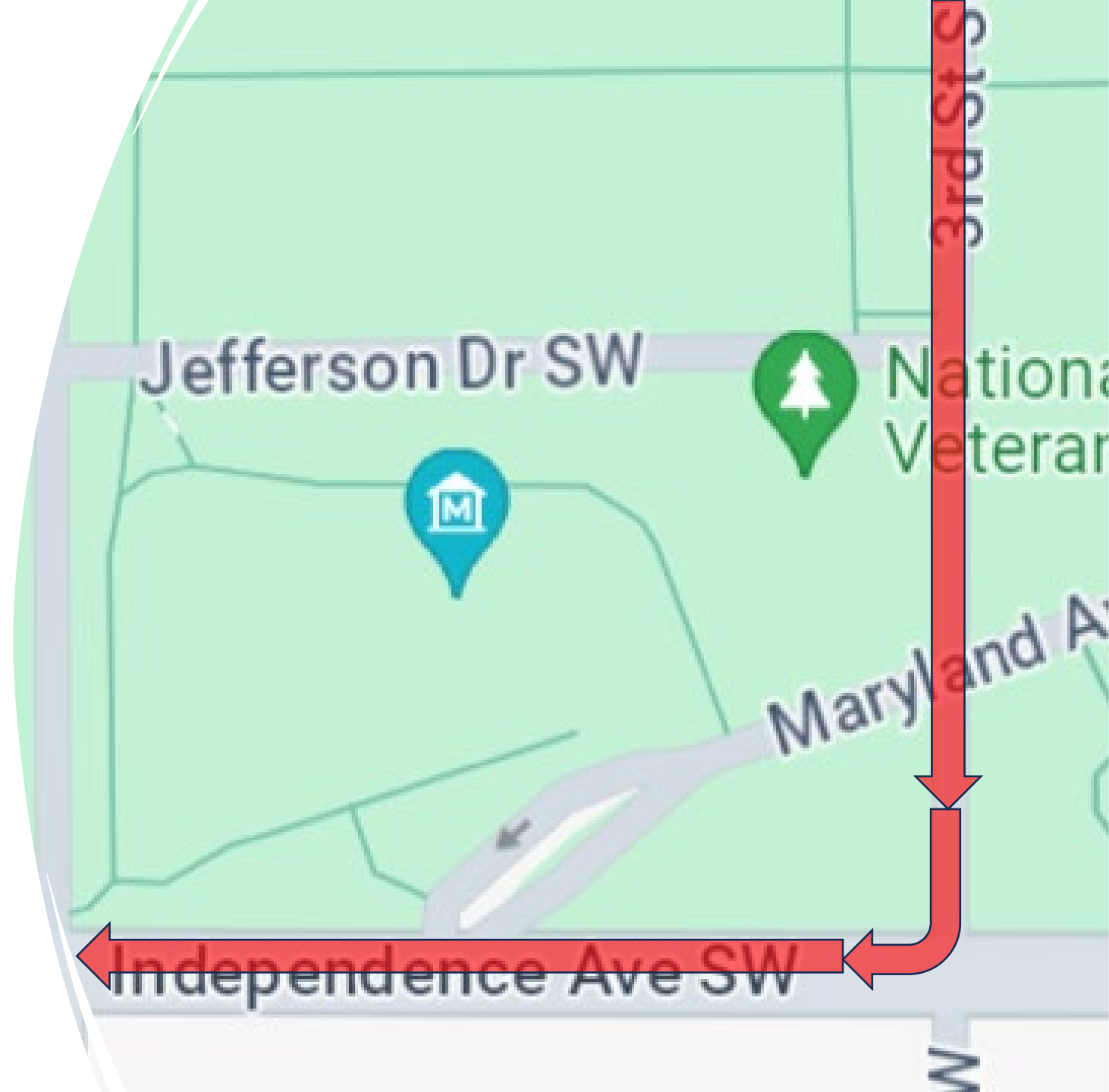
In Front of Capitol Hill

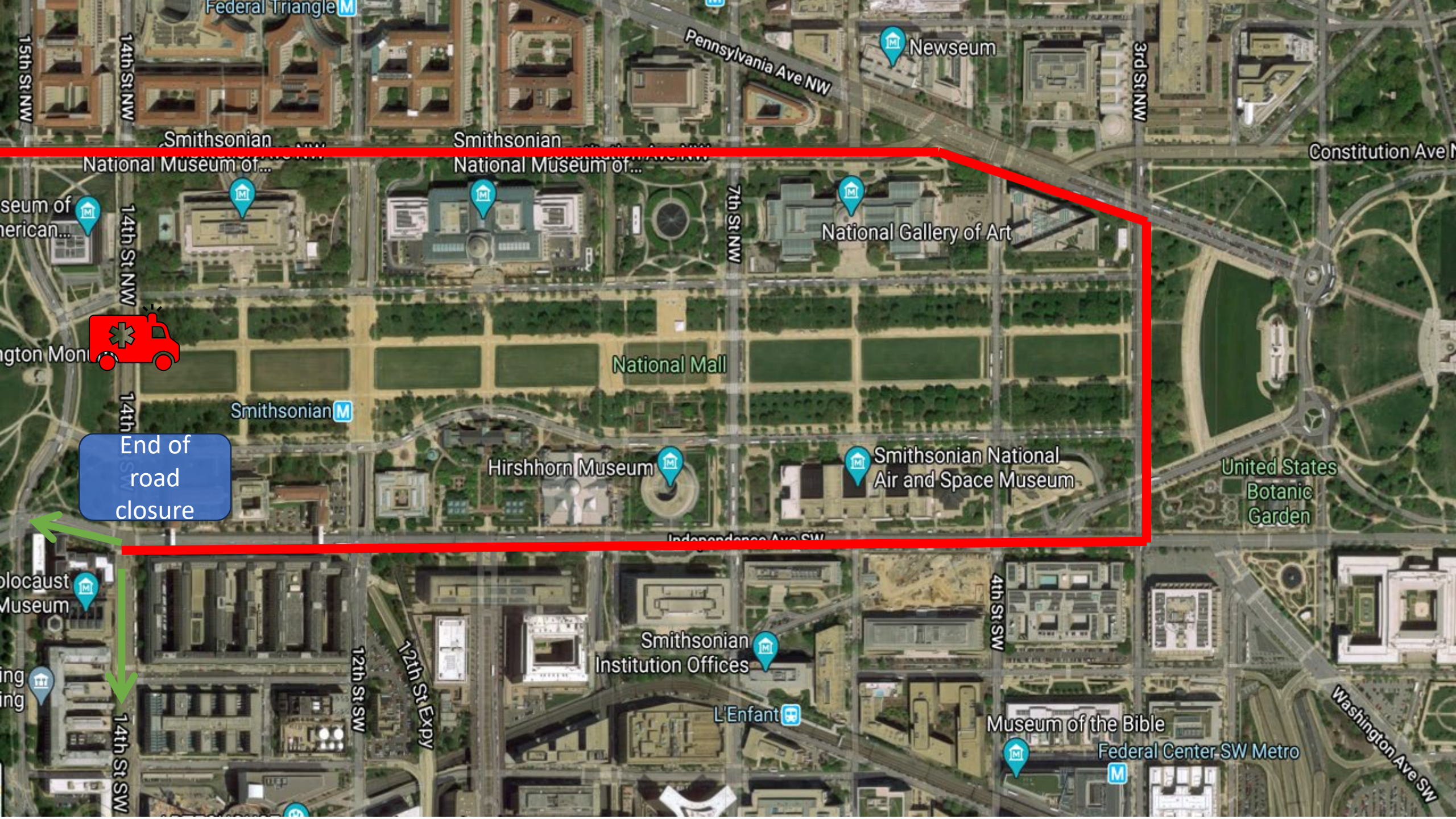
- Coming from the west on Constitution Ave NW
- Right onto 3rd St SW toward Independence Ave SW



In Front of Capitol Hill

- South on 3rd St SW
- Turn right onto
Independence Ave SW





15th St NW

14th St NW

Federal Triangle

Pennsylvania Ave NW

Newseum

3rd St NW

Constitution Ave NW

Smithsonian National Museum of...

Smithsonian National Museum of...

Smithsonian National Museum of American History

14th St NW

7th St NW

National Gallery of Art

Washington Monument

14th St NW

Smithsonian

National Mall

Hirshhorn Museum

Smithsonian National Air and Space Museum

United States Botanic Garden

End of road closure

Independence Ave SW

Holocaust Museum

12th St SW

12th St Expy

Smithsonian Institution Offices

L'Enfant

4th St SW

Museum of the Bible

Federal Center SW Metro

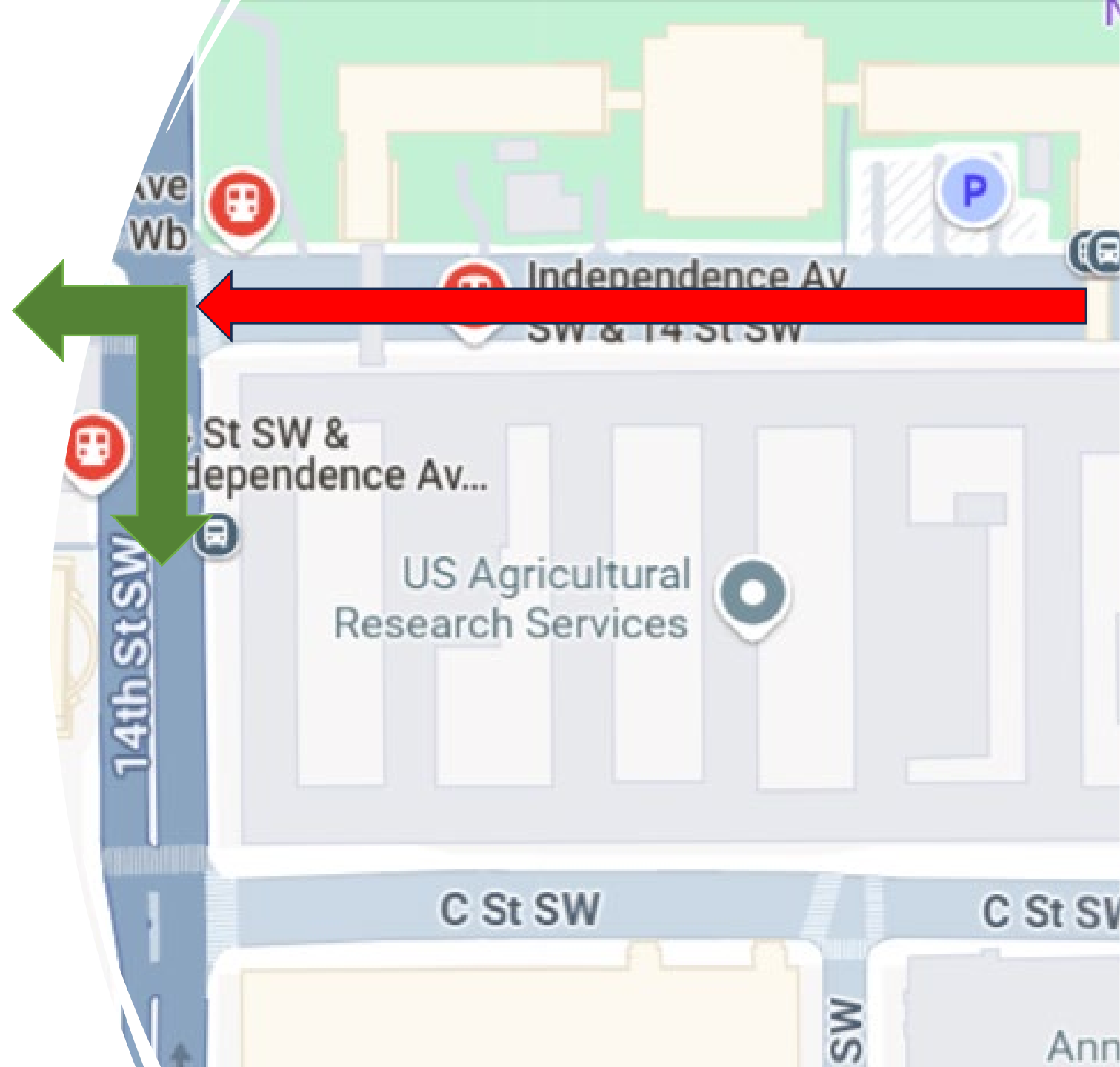
Washington Monument

14th St SW

Washington Ave SW

Demonstration Ride Ending

- Approaching from the east on Independence Ave SW
- Demonstration Ride road closures ends at intersection of Independence Ave & 14th St SW
- Riders have option to turn left onto 14 St SW or continue on the unclosed Independence Ave SW toward the west-end memorials



Rolling to Remember

*Five years of organizing the annual
pro-Veterans 1st Amendment
Demonstration Ride*

